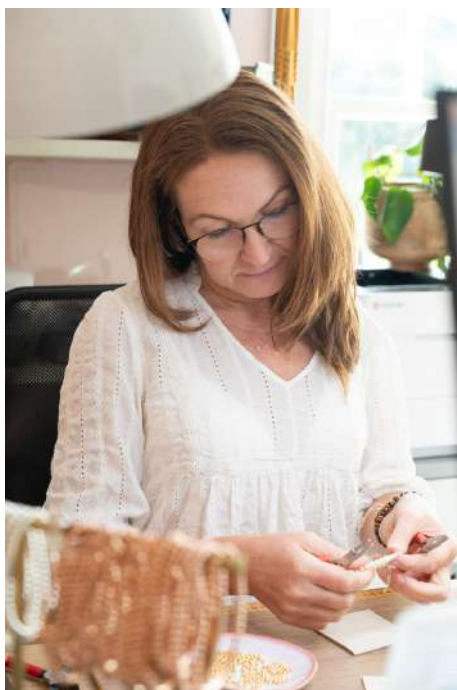


Created by a  
jewelry business  
owner with  
20 years  
experience

# Jewelry Findings & *Their Uses*



Hey there, I'm Sarah,  
I began making jewellery long before I ever called it a business. What started as a little escape quickly grew into a 7-figure gift and jewelry brand with a small team, a busy studio, and customers all over the world. It was fun, but it also pulled me further from the bench - the place where I actually feel most myself.

So, after twenty years of running the company, I chose a different rhythm. I stepped back, pared things down, and returned to working as a solopreneur - designing, making, writing, and sharing the things I've learned along the way. These days my work is simpler: just me, my tools, a cat who believes she runs the place, and a genuine love for helping other makers find their creative freedom.

**Come and tinker around at: [www.jewelandi.blog](http://www.jewelandi.blog)  
Tools, truths, and behind-the-scenes life.**

*Sarah x*

# Jewelry Findings Guide

If you've ever looked at a pile of tiny metal bits and thought... what exactly have I bought here? You're not alone. Every jewelry maker hits that point where jump rings, headpins, and all the other findings blur into one slightly confusing mess.

This guide keeps it simple. What each piece is, what it does, and where it actually goes.

## Bead Caps

Bead Cap



A bead cap is a small metal piece that sits on either side of a bead (usually at the top or bottom) to frame it, hide joins, big holes and give the design a more polished, finished look. They come plain or decorative.

Cone Bead Cap



A coned bead cap is a cone-shaped metal finding that sits over the end of a bead cluster or larger bead, gathering multiple strands or covering the top neatly to create a clean, finished transition.

## Jump Ring

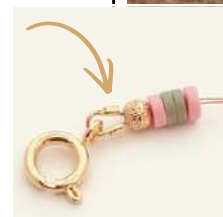
Jumpring



A jump ring is a small metal loop with a cut in it (or soldered closed) used to connect different parts of your jewelry, like attaching a clasp, charm, or pendant. They come in all sorts of sizes and shapes.

## Wire Guardian

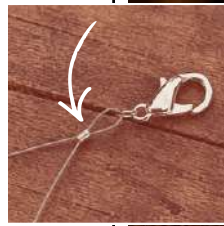
Wire Guardian/  
Protector



A wire guardian is used to protect your beading wire from rubbing, simply thread it through the curved channel so it prevents wear and keeps your finish neat, professional looking and secure.

## Crimp Bead

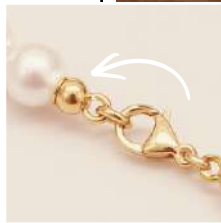
Tube  
Crimp Bead



A tube crimp bead is a tiny metal tube that you gently squash onto your wire to hold things like clasps or beads securely in place.

## Crimp Bead Covers

Crimp Bead  
Cover



A crimp bead cover is placed over a flattened tube crimp bead and gently closed to hide it, giving your design a neat, polished, bead-like finish and hides the crimp bead.

Calotte  
Bead Tip



Use these to hide knots or crimps at the end of a bead string. Gives a nice, neat finish.

Clamshell  
Bead Tip



Use these to hide knots or crimps at the end of a bead string. Gives a nice, neat finish.

# Bails

**Enhancer Bail**



An enhancer bail is a hinged bail that opens and clips onto a chain or necklace, so you can easily add or swap pendants without threading them on.

**Bail Cup & Peg**



A bail cup & peg is used to attach a bead or pearl by gluing the peg into the bead hole, with the cup sitting neatly against the bead to create a clean, finished pendant top.

**Flat Base Glue On Leaf Bail**



A flat base glue-on leaf bail has a smooth pad that sticks to the back of a cabochon or flat bead, with the decorative leaf sitting on top to create a simple, finished pendant.

**Open Bail**



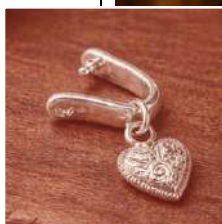
Simply hook your chosen pendant onto the lower tab of the bail. Then, using a chain-nose pliers, gently push the lower tab into place behind the upper tab to close securely.

**Snap Bail with Peg**



Snap Bail - Glue the peg of the snap bail into a half-drilled pearl or round bead to create a droplet like pendant.

**Pinch Bail with Hole**



A pinch bail with a hole grips the top of a drilled bead or pendant while also giving you a loop to attach it easily to a chain or jump ring.

### Tube Bail



A tube bail is a smooth, hollow fitting that slides onto a chain or cord, allowing a pendant to hang neatly without needing a jump ring.

### Spacer with Open Jump Ring



A spacer bail with an open jump ring is a small bead with a loop attached, making it easy to connect charms or components directly into your design. Great for bracelets or necklaces.

### Pinch Bail



A pinch bail is a small connector that grips the top of a drilled bead or pendant, letting you hang it neatly from a chain without needing to wire it yourself.

# Clasps

**Spring Clasp**



A spring clasp is a small circular fastener with a spring-loaded lever that opens and closes to securely connect your jewelry pieces. Used for necklace and bracelet closures.

**Lobster Clasp**



A lobster clasp is a secure, easy-to-use fastener with a spring-loaded arm that opens and snaps shut to attach your jewelry. Used for necklace and bracelet closures.

**Magnetic Clasp**



A magnetic clasp uses two magnets that snap together to fasten your jewelry, making it quick and easy to put on and take off.

**Swivel Clasp**



A swivel clasp is a fastener with a rotating base that prevents twisting, allowing your jewelry or charms to move freely without tangling.

**Hook Clasp**



A hook clasp is a simple fastener where a curved hook catches onto a loop, making it easy to open and close while still holding securely.

**Corrugated Bead Clasp**



A corrugated bead clasp is a round, textured clasp. Ideal for fine jewellery, these 'pinch-and-pull' clasps are easy to open, and have a reliable locking mechanism, making them a popular choice for strands of pearls.

**Filigree  
Fish Hook  
Pearl Clasp**



A filigree fish hook pearl clasp is a decorative fastener with delicate openwork detailing, where a curved hook slots into a clasp to securely finish a pearl necklace or bracelet.

**2 Row  
Tube Clasp**



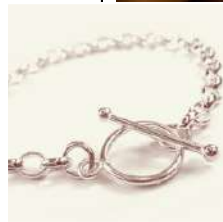
A 2 row tube clasp is a cylindrical fastener with two loops on each side, designed to securely connect and align double-strand bracelets or necklaces.

**Oval Spring  
Clasp**



An oval spring clasp is a simple, secure fastener with a small spring lever, used to close necklaces or bracelets and easily attach charms or connectors. They come in a range of shapes and sizes

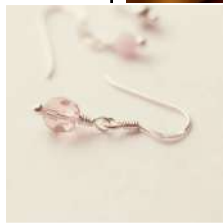
**Toggle Clasp**



A toggle clasp is a simple fastener made of a bar and ring, slide the bar through the ring to secure your piece, making it easy to use and ideal for bracelets or chunkier designs, and adds a decorative finish.

## Earring Findings

**Coil Ear Wire**



A coil ear wire is a ready-made earring hook with a small loop at the bottom, where you simply attach your beaded design or charm to create a finished pair of earrings.

**Hinged Earring Hoop with Loop**



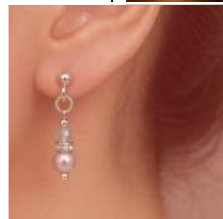
A hinged earring hoop with a loop is a click-shut hoop that opens and closes easily, with a small loop at the front so you can attach beads or charms to create your own drop earrings.

**Ear Back Silicone Comfort Disc**



An ear back silicone comfort disc is a soft, clear pad that slides onto the earring post behind your ear, helping support heavier earrings and stop them from drooping or pulling.

**Ear Post with Ball (Open Ring)**



An ear post with a ball and open ring gives you a ready-made stud base, with a small loop to easily attach beads or charms to create simple drop earrings.

**Earring Post**



Add these sterling silver ear posts to your designs to make earrings quickly and easily. The small notch holds the ear scroll securely in place. Simply attach your design and add a butterfly back to finish.

**Bezel Cup Ear Stud**



A round bezel cup ear stud has a shallow setting at the front, ready for you to glue in a flat-backed stone or cabochon to create simple, professional-looking stud earrings.

**Lever Back Earrings**



Lever back earrings have a hinged closure that clicks shut at the back, giving you a secure base to attach beads or charms and create drop earrings that won't slip out easily.

**Ear Threader with Ring**



An ear threader with a ring is a fine chain earring that threads through the ear, with a small loop at the end so you can attach beads or charms and create delicate, lightweight designs.

**Kidney Ear Wire Earrings**



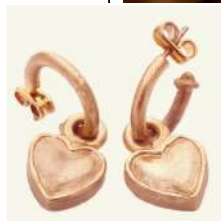
Kidney ear wire earrings use a long, curved hook that threads through the ear and clips closed at the back, helping keep your earrings secure while they hang freely. Gems and beads can be hung off the little semi circle.

**V Shape Ear Wire**



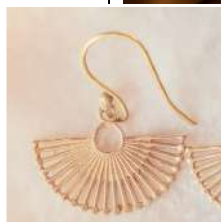
A V shape ear wire is a simple earring hook with a sharp angled design, giving your earrings a more modern look while letting your beads or charms hang freely from the loop below.

**Butterfly Backs**



A butterfly back is a small push-on earring fastening that slides onto the post to hold your earrings securely in place.

**Ball End Ear Wire**



A ball end ear wire is an earring hook with a small bead at the front and a loop below, giving you a neat place to attach your design while adding a simple decorative finish. Can be made from a simple headpin.

**PVC Ear Nut**



A PVC ear nut is a soft, clear earring back that pushes onto the post to hold your earrings securely in place while staying comfortable to wear.

**Snap Setting  
Ear Post**



An ear post with a snap setting lets you easily click a gemstone into place at the front, making it a quick way to create clean, professional-looking stud earrings without needing glue.

# End Caps

**Tube  
End Cap**



Tube end caps are attached to leather cords by selecting a cap with an internal diameter matching the cord. Apply a small amount of super glue to the leather tip, insert into the cap.

**Round  
End Cap**



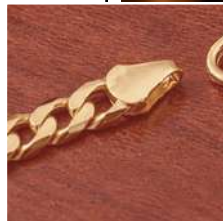
Round end caps are used to neatly finish the ends of cord or chain, creating a smooth, polished end that you can easily attach to a clasp or connector.

**Fold Over  
Cord/Leather  
End Cap**



Fold over cord or leather end caps are used to secure and finish the ends of flat cord by folding the metal sides over the material, giving you a neat end with a loop ready to attach a clasp.

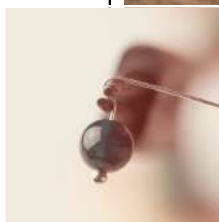
**Silver Flat  
End Cap**



Silver flat end caps are used to neatly finish the ends of chain giving you a clean edge with a loop so you can easily attach a jump ring clasp or connector.

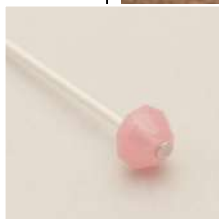
## Head Pins

**Ball Headpin**



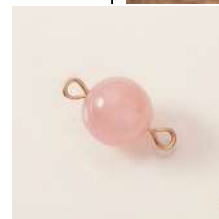
Ball headpins are used to hold beads in place when creating dangles or drops, with the ball acting as a stopper while you form a loop at the other end to attach to your design.

**Flat Headpins**



Flat headpins are straight wires with a flat end that stops your beads from sliding off, letting you add beads and form a loop at the top to create dangles or links.

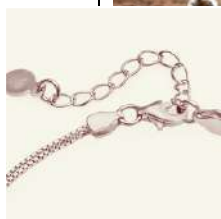
**Hook Headpins**



Hook headpins have a small curved end that helps hold your beads in place, making them ideal for creating simple dangles or drops without the bead slipping off.

## Extender Chain

**Extender Chain**



An extender chain is added to the end of your bracelet or necklace, attaching next to the clasp to give adjustable length so the wearer can fasten it tighter or looser for the perfect fit.

## 925 Tag

**925 Tag**



A 925 tag is a small stamp that shows your piece is sterling silver, usually attached near the clasp on a jump ring to add a professional, finished touch.

There are many more variations of these findings in different shapes, sizes, and designs, so this isn't an exhaustive list, but these are the key ones every beginner should get familiar with.

Ready to Upgrade Your Materials

# Where I Find My Quality Findings...

After 20 years, I've learned that where you buy matters just as much as what you buy. These are the suppliers behind my own pieces, the ones I trust, use, and return to (and a few I'd avoid).



Scan the QR code to explore the full supplier directory

